

# FLEX



2019 PRODUCT CATALOG

## Innovation - Made in Germany

**FLEX** manufactures top performance, quality power tools. We continuously explore new technological frontiers and implement designs that increase the lifespan and performance of each tool. We also focus on optimizing the handling of each tool and increasing the overall comfort and productivity of the end user. Everything we do is based on people and their work and this leads to solutions.

### Your satisfaction is our guiding principle

All professionals who have worked with **FLEX** power tools recognize what is truly important: well thought out design and proven quality solutions.

**FLEX** will do everything to ensure you quality from our continuous product improvements. Whether you are grinding, cutting, sawing, drilling or polishing, our ultimate objective is your complete satisfaction.

## FLEX Electronics

**FLEX** motors are designed with the latest technology. **FLEX** electronics include unique features such as soft start, RPM pre-setting, RPM cruise control, overload protection and heat sensitive temperature sensors to prevent the machine from overheating in case of extreme workloads.

All **FLEX** electric power tools feature spring loaded **FLEX** Longlife™ carbon brushes. When the brushes start to wear down, a tension spring is released pushing the brushes away from the armature, resulting in an overall longer life of the product.

All **FLEX** electric power tools also feature the **FLEX** advanced airflow system, where cooling air is drawn in at the rear of the machine and blown forward through a specially designed air chamber, before exiting the machine in the front.

### Trade Associations

FLEX North America associated with the following trade associations:



**FLEX North America limited**

# ONE YEAR WARRANTY

FLEX North America warrants its Professional Power Tools for a period of one year from the date of original purchase. We will repair or replace at our option, any part or parts of the product and accessories covered under this warranty which, after examination, proves to be defective in workmanship or material during the warranty period. For repair or replacement, return the complete tool or accessory, transportation prepaid, to your nearest Authorized Service Station. Proof of purchase may be required. This warranty does not apply to o-rings and driver blades, or to repair or replacement due to misuse, abuse, use of electrical converters, normal wear and tear or repairs attempted or made by someone other than our Authorized Service Stations.

ANY IMPLIED WARRANTY, INCLUDING THE IMPLIED WARRANTIES OF MERCHANTABILITY AND FITNESS FOR PARTICULAR PURPOSE, WILL LAST ONLY FOR ONE (1) YEAR FROM THE DATE OF PURCHASE.

To obtain information on warranty performance please contact:

**FLEX - North America, Inc.**

1-877-331-6103

[www.FlexNorthAmerica.com](http://www.FlexNorthAmerica.com)

THE FOREGOING OBLIGATION IS FLEX NORTH AMERICA'S SOLE LIABILITY UNDER THIS OR ANY IMPLIED WARRANTY AND UNDER NO CIRCUMSTANCES SHALL FLEX NORTH AMERICA BE LIABLE FOR ANY INCIDENTAL OR CONSEQUENTIAL DAMAGES.

Some states do not allow limitations on how long an implied warranty lasts or the exclusion or limitation of incidental or consequential damages, so the above limitation of exclusion may not apply to you.

This warranty gives you specific legal rights and you may also have other legal rights which vary from state to state.

## Extendible for ceilings up to 10.5 feet

### Lighter than any other

Intelligent use of materials and weight-optimised design: at 8.9 lbs, the FLEX Giraffe® is almost a whole pound lighter than its predecessors. This enables better handling and effortless working on high ceilings as well as on walls.

### As handy as it looks

The unique balance concept of the FLEX Giraffe® guarantees relaxed, balanced working. Thanks to its optimum center of gravity and simple operation, sanding is noticeably more comfortable. The D-shaped handle, slim tube with recessed grip, and optimised joint also contribute to the tool's exemplary ergonomics. What's more: the FLEX Giraffe® is practically vibration-free.



**Light, robust, innovative: the transport case for the FLEX Giraffe®**

- **Optimum protection** thanks to rip-resistant textile material and foam-moulded parts
- **Comfortable to carry** thanks to a generous carrying handle
- **Ample storage space** for accessories

### Sanding discs, sanding pads and abrasives.

With a wide range of sanding discs, sanding pads and abrasives, you can adapt the FLEX Giraffe® to suit every application.



### Ergonomic main guiding tube

Comfortable handling due to oval, slim guiding tube with recessed grip optionally available with toolfree attachable extension for working heights up to approx. 10.5'.



### Full wave electronics

Fully adjustable speed when sanding. The full wave electronic holds the chosen speed even under load. Furthermore: Overload protection via current regulation.



### Extension (sold separately)

Due to the tool-less attachable extension, the FLEX Giraffe® is sanding up to heights of 10.5' completely comfortable and safe. The extension tube can also be used on the FLEX Okapi®.



### Spade handle

Facilitates flexible and comfortable operation. The spade handle protects the tube against bending when put to the floor.



### On/off switch

Accelerator switch for slow and controlled start as well as lock for endurance operation.

Lighter, handier and more robust than ever; the fully redesigned FLEX Giraffe® impresses painters, plasterers, drywall builders and renovators with its high user comfort, versatility and reliable quality - made in Germany.

#### Suction hoods with brush ring

The spring-mounted brush ring prevents sanding marks during application and ensures optimum dust extraction.



#### This makes the FLEX Giraffe® so unique.

- Extremely light – only 8.9 lbs
  - Optimally balanced – for comfortable handling
  - Easily extendible – for high flexibility
  - Innovative bag – for easy transportation
- \* with model GE 5 R

#### Full wave electronics

The speed control allows you to adjust the speed during sanding, while the full wave electronics maintain a constant speed under pressure. Furthermore: overload protection thanks to power regulation.



#### The FLEX Giraffe® GE 5:

TECHNICAL DATA	
Sanding head diameter max.	8.9"
Idle speed	1,100 – 1,650 min <sup>-1</sup>
Power consumption	4.2 Amps
Tool holder	Velcro-backed sanding disc
Insertable	extension, 19.7"
Angle of inclination on head	100°
Adjustable	speed regulation, 6 settings
Length (90° disc)	60"
Weight	8.9 lbs
Power cord	16'

#### Cardanic suspension

The pivot supported sanding head with optimised joint guarantees excellent flexibility and optimal adjustment to walls and ceilings.

#### Flexible drive shaft

...from engine to sanding disc: for reliable transmission, excellent flexibility and minimal weight on the head of the Giraffe for easy handling.

#### Ergonomic guide tube

Comfortable handling thanks to the slim, oval-shaped guide tube with recessed grip – also available with a simple extension for maximum working heights of up to 10.5'.

#### The FLEX Giraffe®: Pleasingly efficient

- Wide range of uses – can eliminate the need for special machinery
- Adapted accessories – increases efficiency
- Top efficiency – for a long service life
- Extremely light machine tool – ensures longer operating times

#### On/Off switch

Acceleration switch for a slow and sensitive start - with locking device for continuous use.

#### D-shaped handle

For flexible and comfortable work. Protects the hose against kinks when stopped.

#### Extension (sold separately)

Thanks to the tool-free, click-in extension, the FLEX Giraffe® can also sand at room heights of up to 10.5' comfortably and safely.

#### Innovative vacuum suction connection

Direct connection of the vacuum hose with the FLEX clip system.



reddot award 2014  
winner



Option to Purchase GE 5 + SH  
(Giraffe + Hose)  
423335



GE 5 + TB + SH as an option to purchase  
(Giraffe + Hose + Bag)  
427632



GE 5 R  
Giraffe Cutaway  
419532

GE 5  
419524

## Recommended Extension Cords

FLEX tools operate efficiently within 110-120 volts. Improper cord sizing will cause a drop in voltage, resulting in loss of power, overheating, and possible damage to the tool. Determine the rated amp listing of your tool from the specification label on the tool, then use the chart below to determine the proper gauge and length of cord to use.

AMP Rating	25	50	100	150	200	250	300	400	500
0-2	18	18	18	16	14	14	14	12	12
2-3	18	18	16	14	14	12	12	10	10
3-4	18	16	14	14	12	12	10	10	
4-5	18	16	14	12	10	10	10		
5-6	18	16	12	12	10	10			
6-8	16	14	12	12	10				
8-10	16	14	12	10					
10-12	16	14	10						
12-15	12	12	10						
15-20	10	10	10						

## Conversion Chart

inch to mm

1 inch = 25.4 mm  
1mm = 3/64 inch

**To Convert to Millimeters (mm)**

Multiply inches  
x 25.4

**To Convert to Inches**

Multiply millimeters  
x 0.03937 or  
divide by 25.4

All Giraffe SKUs  
come with one  
backing pad and  
sandpaper pad



Additional handle for GE 5 / GE 5 R  
408972



12' Anti-Static Hose  
412309



Bag Inserts  
408735 and 408743



Vacuum Hose Adapter  
406716



Transport Case  
408867



Extension for GE 5 / GE 5 R  
409294



Clip Adapter  
408360

## ACCESSORIES FOR THE HANDY-GIRAFFE® WALL AND CEILING SANDER

### Velcro Backing Pads



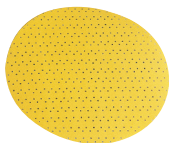
Description	QP	Part number
Velcro Backing Pad, Hard, Round 8.85"	1	412899
Velcro Backing Pad, Super Soft, Round 8.85"	1	260232
Velcro Adapter Pad with Clamping Dish and Screw, Super Soft, Round 8.85"	1	399418

### Accessories



Description	QP	Part number
12' Anti-Static Hose	1	412309

### Velcro Abrasive Paper (Perforated)



Description	QP	Part number
P 40 Grit, Sanding Paper, Round 8.85"	25	280739
P 60 Grit, Sanding Paper, Round 8.85"	25	260233
P 80 Grit, Sanding Paper, Round 8.85"	25	260234
P 100 Grit, Sanding Paper, Round 8.85"	25	260235
P 120 Grit, Sanding Paper, Round 8.85"	25	282405
P 150 Grit, Sanding Paper, Round 8.85"	25	311995
P 180 Grit, Sanding Paper, Round 8.85"	25	311987
P 220 Grit, Sanding Paper, Round 8.85"	25	260236

### Sanding Heads/Backing Pads



Description	QP	Part number
80 Grit Velcro Sanding Grid, Round 8.85"	25	260237
100 Grit Velcro Sanding Grid, Round 8.85"	25	260230
80 Grit Velcro Sanding Grid, Round 8.85"	25	446173
100 Grit Velcro Sanding Grid, Round 8.85"	25	446181

## Leading Through High Quality Performance

---

**Natural stone has its own laws. They call for special experts. These experts are able to read the nuances and colors in the stone. They can recognize the unique masterpiece that a completely structured piece of work can evolve into. They experts know that good work also requires good tools.**

For over 80 years FLEX has been the competent and innovative partner for working with natural stone. Over time a comprehensive range of machines was developed in close co-operation with experienced stone masons. This resulted in a product range that sets the standard in every aspect, with features such as robustness and reliability, handling, ease of maintenance and - above all - safety of operation under wet conditions.

The long-time competence of FLEX also includes the knowledge that FLEX engineers have about the nature of stone, its characteristics, and its sensitivities. That is why a FLEX machine does not damage or soil the valuable "natural stone" raw material, but rather refines it - in a way a steadfast relationship ought to be. This allows the user to do perfect work.



FLEX is the world authority for WET grinders and polishers for natural stone. Water serves two purposes in the grinding / polishing of natural stone:

- to bind the granite dust into a slurry
- to act as an evenly distributed film of molecules sandwiched between the grinder / polishing head and the natural stone.

This hydroplaning results in a smooth surface treatment and extends the life usage of the diamond abrasives that are used with the grinders / polishers. All FLEX WET grinders and polishers are equipped with a ground fault circuit interrupter (GFCI) to ensure safe operation in wet environments.

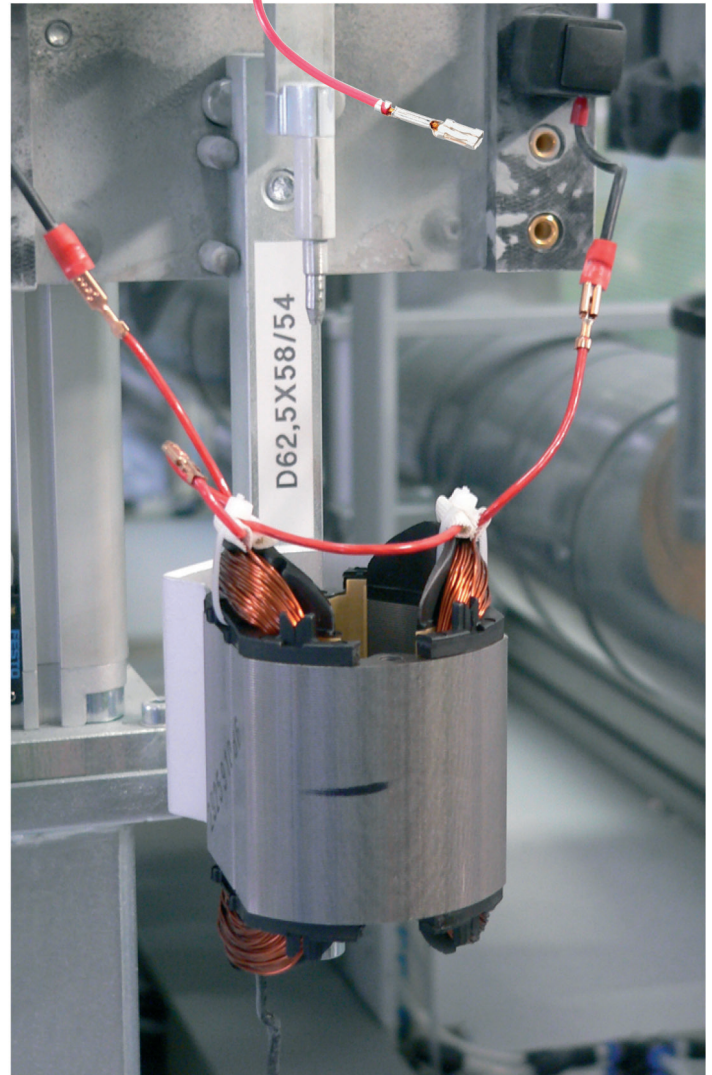
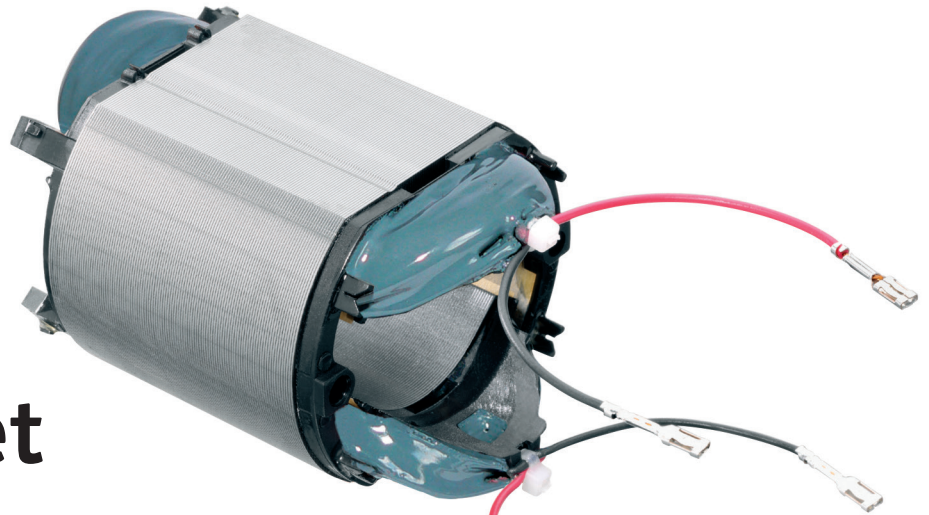
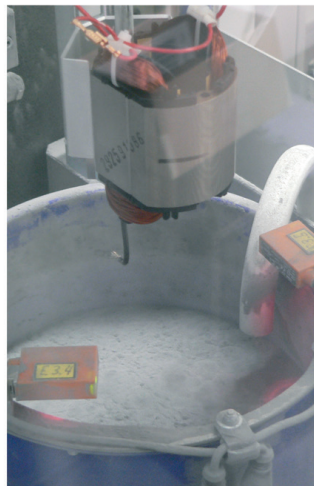


## The Most Innovative Technique On The Market

**The new FLEX powder coating process for magnetic fields offers an important advantage by prolonging the longevity of FLEX machine motors.**

Powder coating is a process that offers the best possible protection against abrasive elements. This is achieved by covering the coils in a uniform protective coating. Air is blown through the bottom of a container holding powdered plastic. The powder is held in suspension inside the container and behaves similar to a liquid. A magnetic field is dipped into the container where the plastic powder melts onto the pre-heated coils. The metal packet is not affected.





The new FLEX plant has 12 stations which hang from a continuous belt. After loading and connecting the magnetic field to the heating element, the process of heating, baking, coating, cleaning, hardening and cooling starts automatically. The plant is completely enclosed and has its own air extraction system. The powder feed is fully automatic. We use bondable enameled wire for the coils, which allows for the baking process, and guarantees a stable geometry of the coil head.



# Wet Grinders - Polishers for Natural Stone and Concrete

# FLEX

## Wet Polishers

	TYPE OF TOOL	APPLICATION	TO BE USED WITH	TYPE OF STONE
	<b>Variable Speed 5" Wet Polisher</b> LE 12-3 100 WET	<ul style="list-style-type: none"> <li>Wet grinding of granite and marble</li> </ul>	<ul style="list-style-type: none"> <li>Diamond resin polishing pad</li> </ul>	<ul style="list-style-type: none"> <li>Granite and marble</li> <li>Concrete</li> </ul>
	<b>Single Speed 5" Wet Polisher</b> L 12-3 100 WET	<ul style="list-style-type: none"> <li>Wet grinding of granite and marble</li> </ul>	<ul style="list-style-type: none"> <li>Diamond resin polishing pad</li> </ul>	<ul style="list-style-type: none"> <li>Granite and marble</li> <li>Concrete</li> </ul>
	<b>Constant Speed WET Polisher</b> LW 1503A	<ul style="list-style-type: none"> <li>Edge polishing</li> <li>Small surface polishing i.e. countertops</li> </ul>	<ul style="list-style-type: none"> <li>Diamond resin polishing pads</li> </ul>	<ul style="list-style-type: none"> <li>All natural stone types</li> <li>Concrete</li> </ul>
	<b>Constant Speed High Speed WET grinder</b> LW 1509	<ul style="list-style-type: none"> <li>Bulk material removal</li> <li>Edge breaking</li> <li>Coarse grinding</li> <li>Preparation work prior to polishing</li> </ul>	<ul style="list-style-type: none"> <li>Diamond grinding discs</li> </ul>	<ul style="list-style-type: none"> <li>All natural stone types</li> <li>Concrete</li> </ul>



## Backing Pads

Part #	Size	Descriptions	QP
451600	3"	Ogee Aluminum Back Up Pad NEW!	1
451430	4"	Soft Backing Pad	1
451450	4"	Rigid Backing Pad	1
451500	5"	Soft Backing Pad	1

# Wet Grinders - Polishers for Natural Stone and Concrete

# FLEX

## LE 12-3 100 WET

469300



### Variable Speed 5" Wet Polisher

LE 12-3 100 WET has a brass quick fit connector for easy connection to a 1/2" water hose. Water feed and flow control are fitted under the motor housing. Extra powerful 9.3 amp motor with high torque for superior applications. Softstart, over load protection, and techogenerator constant speed control. Three jet nozzle can be removed to give one central water jet.

SPECIFICATIONS	LE 12-3 100 WET
Max. disc diameter	5"
Speed, without load	1,200-3,700 RPM
Power input	9.3 AMP
Weight	5.3 lbs

## L 12-3 100 WET

469327

### Single Speed 5" Wet Polisher

SPECIFICATIONS	LE 12-3 100 WET
Max. disc diameter	5"
Speed, without load	3,700 RPM
Power input	9.3 AMP
Weight	5.3 lbs

## LW 1503 A

469297



### Compact 5" WET polisher with central water feed

LW 1503 features a new water disbursement nozzle. Brush Cap Guard protects brushes from water. New and improved GFCI cord. It is a compact, but powerful workhorse. Due to its light weight and portability, this product has become the standard for all WET polishers. The LW 1503 is frequently used to polish surfaces and edges of natural stone (sink holes, counter top edges, and other small stone surfaces).

Velcro™ backing pads and diamond resin polishing pads are to be purchased separately.

SPECIFICATIONS	LW 1503
Max. disc diameter	5"
Speed, without load	3,700 RPM
Power input	7.4 AMP
Weight	4.4 lbs

STANDARD EQUIPMENT	
1 bail handle	236.934
1 open-ended wrench 17 mm	106.461
1 GFCI operator protection circuit breaker in cable	357.545

## LW 1509

288896



### This FLEX WET grinder is a true powerhouse

This compact 4-1/2" high speed WET grinder is designed for maximum material removal of concrete or natural stone. With its 8,300 RPM and 7.8 AMP motor, it is the fastest WET grinder in the market. It is intended for all heavy duty stone grinding applications (bulk material removal, edge breaking, coarse grinding of uneven surfaces and polish preparation work).

Note: The LW1509 is not intended for use with Diamond Cup Wheels.

SPECIFICATIONS	LW 1509
Max. disc diameter	4-1/2"
Speed, without load	8,300 RPM
Power input	7.1 AMP
Weight	4.8 lbs

STANDARD EQUIPMENT	
1 bail handle	236.934
1 open-ended wrench 17 mm	106.461
1 GFCI operator protection circuit breaker in cable	357.545
1 splash guard	289.183

## ADVANTAGES AT A GLANCE

### ADDITIONALLY FOR LE 12-3 100 WET AND L 12-3 100 WET

- Dust protected switch increases functional reliability and longevity
- GFCI-Cable safety switch is integrated in the cable for safe working
- Bail handle for a firm grip even when working vertically
- Powder coated magnetic field protects against abrasive dust and rust

### ADDITIONALLY FOR LW 1503 A

- Central water feed for wet grinding of granite and marble
- GFCI operator protector circuit breaker: integrated in cord
- Quality shut-off carbon brushes: protects the motor against damage
- Wet polishing with Velcro™ diamond polishing system

### ADDITIONALLY FOR LW 1509

- Central and external water feed
- 360° adjustable aluminum safety guard with integrated rubber splash skirt
- Dual water feed
- GFCI-Cable safety switch is integrated in the cable for safe working

Sanding discs/polishing pads are to be purchased separately.

## Tile Saw - CS 40 WET

429392



### 5" Masonry Wet Saw

The Flex CS 40 wet tile saw is made for use in the stone, tile and glass Industries. The powerful 12 amp motor makes it possible for the saw to cut through any tough material. The wet tile cutter is also equipped with a high quality water-feed system that will eliminate the harmful dust particles which are common in dry cutting applications. Includes a side handle for more stability and the CS 40 has the ability to accept a curved cutting blade thus making curve cutting operations safer and easier.

SPECIFICATIONS	CS 40 WET
Motor	12 Amp
Max. disc diameter	5"
Bevel cut	0-45
Weight	9 lbs

Sanding discs/polishing pads are to be purchased separately.

# What Do Professionals Use for Grinding?

# FLEX

## The Innovator and Leader in Grinder Technology

**FLEX** grinders are designed as rugged power tools and have been engineered to take a beating. We listened to our customers and have designed a family of power tools that will effectively get the job done. Any job, anywhere.

All **FLEX** grinders are equipped with our innovative Longlife carbon brushes. The carbon brushes inside the motor are tension spring loaded.

Many of the grinders are designed with full wave electronics and feature soft start, overload protection and temperature sensors to prevent the motor from overheating.

These products also feature an RPM cruise control. The full wave electronics will automatically adjust the motor strength to deliver consistent and constant RPM regardless of the pressure applied to the tool. Consistent and constant RPM are important, because it delivers superior grinding results and increases the overall life of the grinder.

### SLENDER REARSPECIAL GRIP



Ideal for surface finishing because of extremely flat attack angle and balanced weight distribution. Equipped with dust protected on/off switch located underneath, safety catch and lock.

### FLEXGRIP – THE MULTI-HANDLE



With built-in holding wrench for exchanging the discs without additional tools.

### FIGHT VIBRATION – FLEX SOFTVIB-HANDLE



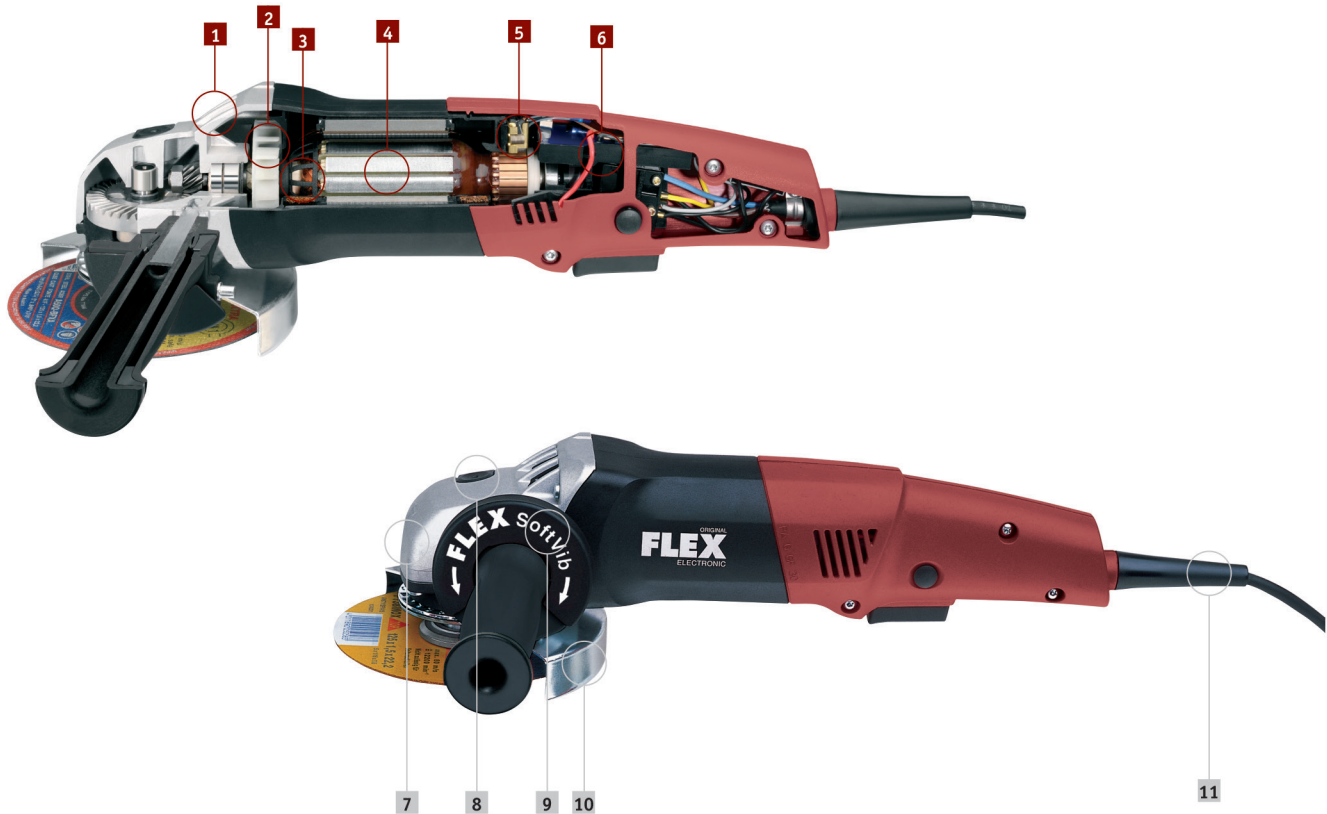
The vibration damping construction of the elastic body of the SoftVib-Handle reduces vibration levels when compared to standard handle by up to 60%. The hand and arm joints of the user are subjected to less stress and fatigue.

### PATENTED SAFETY DISC GUARD



Can be adjusted without tools in 24 stop positions by 360 degrees. Turnable in one direction only.

## For metal and concrete surfacing angle grinders



- 1 Air vents to front**  
Protects user and motor from abrasive swarf.
- 2 Large ventilator**  
Optimized in wind tunnel test for maximum cooling
- 3 Winding protecting cage**  
Rotating ribs prevent abrasive swarf from damaging the windings of the armature and provide for additional cooling. This extends the service life of the motor considerably.
- 4 High-performance armature**  
Sustained power and endurance, heat-resistance. Winding protected from aggressive swarf by a winding protecting cage.
- 5 Quality auto-stop carbon brushes**  
Protects the motor from damage.
- 6 Microprocessor electronics**  
Greater performance, safer, more convenience.
- 7 Gearbox housing made of die-cast aluminum**  
Light, sleek, robust.
- 8 Spindle lock**  
double safety because of recessed design.
- 9 FLEX SoftVib – the multi-handle**  
The vibration damping construction of the elastic body of the SoftVib-Handle reduces vibration levels noticeably. Equipped with built-in holding wrench - for exchanging the discs without additional tools.
- 10 Patented safety disc guard**  
Adjustable without tools, impossible to lose, with rotation lock.
- 11 Perfection to the very last detail**  
Highly flexible cable bushing prevents cable breakage. 13-foot power cable with FLEX-red plug.

### FLEX electronics: More power, longer service life

- **Four-fold microprocessor electronics:** with consistent speed control, soft start, starter lock, and overload protection
- **Five-fold microprocessor electronics:** with consistent speed control, soft start, starter lock, overload protection, and temperature monitoring
- **Six-fold microprocessor electronics:** with consistent speed control, soft start, starter lock, overload protection, temperature monitoring, and speed selection set by an adjustment wheel

### FLEX Performance: What is transferred to the disc is critical

- **Outstanding output:** thanks to highly machined armature
- **High operating efficiency:** great energy with cost-efficient operation
- **Best endurance run characteristics:** due to high manufacturing precision

### FLEX Ergo design: created for precise, low-fatigue work

- **Optimal center of gravity:** precisely in the middle of the machine; finely balanced
- **Sleek motor case:** with ergonomic, waisted grip depression
- **Structure surface\*:** no slipping, for a secure grip

*\*on G-versions with super-sleander rear special grip*

## L7-12 115

462187



### 6A 4 1/2" Angle Grinder

The new L7-12 115 features a Long-Life Motor with highly improved carbon brush lifetime along with high dust protection due to ironclad winding and encapsulated electronics. It is extremely lightweight & easy to use due to the skinny grip 6.9" circumference. It also features a unique tool free dust guard adjustment with clamping lever. This grinder features best in class power and runs 42% cooler than its closest competitor.

SPECIFICATIONS	L7-12 115
Power output	6 A
No load speed	12.000 rpm
Max. disc size	4-1/2"
Weight	3.3 lbs

## L8-11 125

461989



### 7.5A 5" Angle Grinder

The latest compact grinder from FLEX features a highly efficient and resilient motor for more power output along with extensive dust protection to extend its useful life. The new narrow and ergonomic shape is extremely light, handy and comes with a side grip. Changing blades is easy with the spindle lock, and the safety guard features tool-free adjustment.

SPECIFICATIONS	L8-11 125
Power output	7.5 A
No load speed	11.500 rpm
Max. disc size	5"
Weight	4.1 lbs

## L10-11 125

461997



### 9A 5" Angle Grinder

The new L 10-11 125 angle grinder adds a high-quality and well-equipped angle grinder to the FLEX portfolio. Optimised for use in refurbishment, renovation, modernisation work as well as metal working, this angle grinder is a premium grade product. The tool's newly developed long-life motor improves the service life of the brushes, which perform up to 40 percent better in the test than comparable tools from other manufacturers. It also has numerous safety features.

SPECIFICATIONS	L10-11 125
Power output	9 A
No load speed	11.500 rpm
Max. disc size	5"
Weight	4.6 lbs

## L21-8 180

462039



### 15A 7" Angle Grinder

The L21-8 180 is a true workhorse. Featuring a powerful 15A motor, FLEX SoftVib Vibration reduction and a robust design makes this the go to option for large jobs. The tool's newly developed long-life motor improves the service life of the brushes, which perform up to 40 percent better in the test than comparable tools from other manufacturers. It also has numerous safety features.

SPECIFICATIONS	L21-8 180
Power output	15 A
No load speed	8.300 rpm
Max. disc size	7"
Weight	11.2 lbs

## L26-6 230

462047



### 15A 9" Angle Grinder

The FLEX L26-6 is not for the faint of heart. It has a powerful 15A motor with T-Rex power. Combine this abundance power with the FLEX SoftVib system and the grinders ergonomic shape and this tool is ready for anything you could throw at it. The tool's newly developed long-life motor improves the service life of the brushes, which perform up to 40 percent better in the test than comparable tools from other manufacturers. It also has numerous safety features.

SPECIFICATIONS	L26-6 230
Power output	15 A
No load speed	6.500 rpm
Max. disc size	9"
Weight	11.9 lbs

## L15-10 150

462020



### 13A 6" Angle Grinder

The L15-10 150 is designed for the professionals needs. Its safety features include a soft start system, reload protection and restart protection. In addition, its tool free adjustable guard makes it easy to adapt for whatever the job requires. The tool's newly developed long-life motor improves the service life of the brushes, which perform up to 40 percent better in the test than comparable tools from other manufacturers. It also has numerous safety features.

SPECIFICATIONS	L15-10 150
Power output	13 A
No load speed	10.000 rpm
Max. disc size	6"
Weight	7.9 lbs

## L14-11 125

462004



### 12A 5" Angle Grinder

The L14-11 125 is designed for the professionals needs. Its safety features include a soft start system, reload protection and restart protection. In addition, its tool free adjustable guard makes it easy to adapt for whatever the job requires. The tool's newly developed long-life motor improves the service life of the brushes, which perform up to 40 percent better in the test than comparable tools from other manufacturers. It also has numerous safety features.

SPECIFICATIONS	L14-11 125
Power output	12 A
No load speed	11.500 rpm
Max. disc size	5"
Weight	5.1 lbs

## LE14-11 125

462012



### 12A 5" Angle Grinder

The LE14-11 125 is designed for the professionals needs. It is the variable speed version of the L 14-11 125 and can be adjusted for a no load speed of between 2800 and 11500 rpm. Its safety features include a soft start system, reload protection and restart protection. In addition, its tool free adjustable guard makes it easy to adapt for whatever the job requires. The tool's newly developed long-life motor improves the service life of the brushes, which perform up to 40 percent better in the test than comparable tools from other manufacturers. It also has numerous safety features.

SPECIFICATIONS	LE14-11 125
Power output	12 A
No load speed	2.800 - 11.500 rpm
Max. disc size	5"
Weight	5.1 lbs

## Accessories

Fits L8-11 125, L10-11 125, L14-11 125, LE14-11 125

469254



### 5" Disc guard with removable edge segment

Extraction hood kit for working with cutting discs of 5" angle grinders. Enables the operator to work very close to edges at maximum extraction power.

445479



### 5" Dust extraction attachment set

Extraction hood kit for working with cutting discs for 5" angle grinders. Consisting of extractor and aluminium cover. Can be fitted to the existing grinder guard without using any tools.



## LBR 1506 VRA - The Specialist for Larger Pipe Diameters



The sanding belt nestles itself to any curve - up to 10" diameter. Weld seam and pipe sander.

### FLEX Metal Surface Treatment Guide

#### Removal of weld seams on stainless steel, steel and aluminum

- Pre-sand with coarse grinding grits (60-100 grits) depending on the thickness of the welding seam.
- As soon as the welding seam has almost been sanded to the level of the surface, change to a finer grit (120-180 grits).  
Work through the sequence of ever finer grits until the requested finish is achieved. Do not skip grit levels.
- Use SCM belts to achieve a decorative finish:
  - Use a 100/120 or a 180/240 granulation SCM belt to achieve a dull finish. Machine should be set to "3" on the RPM pre-set dial.
  - Use a 400 granulation SCM belt to achieve a brilliant finish. Machine should be set to "6" on the RPM pre-set dial.

#### Removal of scratches from stainless steel and non-ferrous metal

- The deeper the scratch, the coarser the grit is to be used.
- Start sanding with the coarsest grit. Machine should be set to "2" on the RPM pre-set dial.  
Move the sander over the entire area of the scratch.
- When the scratch is almost invisible, start working with even finer grits until desired finish has been achieved.  
Do not skip grit levels as this will leave an unfavorable finish.

#### Achieving a polished mirror finish on stainless steel and non-ferrous metal

- Start with a coarse grit. Work the surface until you have a "universal scratch pattern".
- Step through the various grit levels (grit 400, grit 600, grit 1,500) until you have finished with the finest grit.  
Only proceed to the next grit level when a universal scratch pattern has been achieved.

## LBR 1506 VRA

282510



## Pipe Belt Sander for Weld and Seam Sanding Applications

The LBR 1506 VRA is a “wrap-around” pipe sander. The sanding belt wraps around the pipe and consequently requires only a few steps to sand the entire circumference of the pipe. The LBR 1506 VRA is designed to work on 3/8 to 10” diameter pipes and renders welding seams invisible and carefully gives every stainless steel pipe a high gloss finish. Due to its very powerful 11 AMP motor, its infinitely adjustable speeds and its unique wrap-around technology, this product is used where many pipes and handrails are found (refineries, liquid/ gas operations, food processing industries and hotels).

### ADVANTAGES AT A GLANCE

- Quality shut-off carbon brushes: protects the motor against damage

### ADDITIONALLY FOR LBR 1506 VRA

- FLEX four-fold full-wave electronic control: with consistent speed control, soft start, overload protection and speed pre-selection
- Sanding belt tension: spring loaded, adapts to pipe diameter from 3/8 to 10”
- Sanding belt replacement: quick and easy
- Light design: for work without fatigue
- Sanding belts: wide assortment included sanding fleece for stainless steel applications

SPECIFICATIONS	LBR 1506 VRA
Power input	11 AMP
Belt speed	33-98 ft/sec
Belt dimensions	618 x 40 mm
Weight	11.25 lbs

STANDARD EQUIPMENT	
1 side handle	252721
1 bail handle	259290
1 set of grit sanding belts (36, 60, 120, 240)	246816
1 Hexagon socket screw key, special tool 5	115460
1 Hexagon socket screw key, special tool 6	104167
1 Hexagon socket screw key, special tool 3	178772

### CONTINUOUS BELTS FOR LBR 1506 VRA

#### Sanding belt, continuous



For pre-sanding pipes and pipe fittings

Dimensions in inches	Grit	QP	Part number
24" x 1 1/2"	36	10	223670
24" x 1 1/2"	60	10	223689
24" x 1 1/2"	120	10	266132

#### Sanding fleece, continuous



For pre-sanding pipes and pipe fittings

Dimensions in inches	Grit	QP	Part number
24" x 1 1/2"	240	3	223670
24" x 1 1/2"	400	3	317985
24" x 1 1/2"	100	3	317969

## VCE 33 L AC + Hose HEPA

444251



### 9 Gallon HEPA Vacuum

The powerful VCE 33 L AC HEPA vacuum cleaner features a high-performance turbine that ensures high suction capacity. It is also capable of wet vacuuming and has an electronic liquid level control. This vacuum has an 9 gallon capacity as well as a 4.5 gallon liquid capacity. Its HEPA grade filter makes this vacuum suitable to almost any conditions you could throw at it. Combine this Vacuum with our 5" adjustable dust shroud and any 5" grinder to be OSHA compliant.

SPECIFICATIONS	VCE L AC+HOSE HEPA
Power output	11.2 A
Tank capacity	8.7 gallon
Liquid capacity	4.5 gallon

## VCE 44 L AC + Hose HEPA

460060



### 12 Gallon HEPA Vacuum

The powerful VCE 44 L AC HEPA vacuum cleaner features a high-performance turbine that ensures high suction capacity. It is also capable of wet vacuuming and has an electronic liquid level control. This vacuum features a bigger tank capacity than the VCE 33, with a maximum capacity of 12 gallons and a maximum liquid capacity of 7 gallons. Its HEPA grade filter makes this vacuum suitable to almost any conditions you could throw at it. Combine this Vacuum with our 5" adjustable dust shroud and any 5" grinder to be OSHA compliant.

SPECIFICATIONS	VCE 44 L AC+HOSE HEPA
Power output	11.2 A
Tank capacity	11.6 gallon
Liquid capacity	7 gallon

## Vacuum Accessories

DESCRIPTION	QP	PART NUMBER
PES Class M flat folded filter	1	445118
HEPA Filter	1	445126
PES flat folded filter	1	445134
Fleece filter bags	1	445088
Resealable, reusable filter bag	1	445517
Disposal filter bag	1	445061
Handle for vacuum cleaner	1	445150
L-BOXX holder	1	445169
Giraffe holder	1	445185
Antistatic hose with air control	1	406708
Suction hose with air control	1	445037
Antistatic vacuum adapter (universal system)	1	445029
Antistatic vacuum adapter for FLEX clip-system (27 mm)	1	461628
Antistatic vacuum adapter for FLEX clip-system (32 mm)	1	445142
Antistatic vacuum adapter for FLEX clip-system (36 mm)	1	461636
Vacuum Cleaning Set	1	445053

## Master Parts Distributor For FLEX North America

### Powerhouse Distributing

11011 "I" Street • Omaha, NE 68137

Toll Free: 888-809-4749 • Fax: 888-809-4748

#### ALABAMA

Alabama Jack  
1140 5th Avenue North  
Birmingham, AL 35203  
Phone: 205-251-8156

#### ARIZONA

Arizona Armature  
4641 S 33rd  
Phoenix, AZ 85040  
Phone: 602-296-4434

Glenn's Tool Service  
2149 E. Indian School Road  
Phoenix, AZ 80160  
Phone: 602-264-6203

Precision Tool And Supply  
4857 East 29th Street  
Tucson, AZ 85711  
Phone: 502-745-1100

UltraTuf Diamond  
3206 E. President Street  
Tucson, AZ 85714  
Phone: 520-294-5006

#### ARKANSAS

Tool Service Co.  
5732 Wheeler Avenue  
Fort Smith, AR 72901  
Phone: 479-648-3125

#### CALIFORNIA

Cut It  
1950 Channel Drive  
West Sacramento, CA 95691  
Phone: 916-372-8848

Davis Tool Company  
2911 S. Main Street #1  
Santa Ana, CA 92707  
Phone: 714-549-7836

Kleer-Vu Repair  
11728 Johnson Lake Road  
Lakeside, CA 92040  
Phone: 619-561-1720

Lee's Tools  
1924 N. Long Beach Blvd.  
Compton, CA 90221  
Phone: 310-639-1900

#### CALIFORNIA (cont.)

Minit Tool Co., Inc.  
4170 E. Washington Blvd.  
Los Angeles, CA 90023  
Phone: 323-264-7006

#### CONNECTICUT

Colony Tool & Supply  
15 Stiles Road  
New Haven, CT 06512  
Phone: 203-469-0000

CS Unitec Inc.  
22 Harbor Avenue  
Norwalk, CT 06850  
Phone: 800-700-5919

Utility Electric Service  
255 Chapell Road  
South Windsor, CT 06074  
Phone: 860-246-7271

#### FLORIDA

Tool Master Inc.  
196 East 4th Avenue  
Hialeah, FL 33010  
Phone: 305-883-1903

Empire Tool Company  
2296 W. 80th Street  
Hialeah, FL 33016  
Phone: 305-821-0740

Florida Tool Repair  
5821 Hallandale Beach Blvd.  
Hollywood, FL 33023  
Phone: 954-892-2310

#### GEORGIA

South City Tool Inc.  
5442 Frontage Rd. Ste 100  
Forest Park, GA 30297  
Phone: 404-608-9999

Romey Power Tool Repair  
121 Price Hills Trail  
Sugar Hill, GA 30518  
Phone: 770-932-8175

#### KENTUCKY

Value Tools Inc.  
2501 Crittenden Drive  
Louisville, KY 40217  
Phone: 502-636-2835

#### LOUISIANA

Beerman Precision Inc.  
4206 Howard Avenue  
New Orleans, LA 70125  
Phone: 504-207-6000

#### MARYLAND

Machine Doctor  
311 Conowingo Road  
Conowingo, MD 21918  
Phone: 410-378-0094

#### MASSACHUSETTS

Renner-Colony LLC  
5 Robert J Way  
Plymouth, MA 02360  
Phone: 800-339-2219

Star Sales  
29 Commerce Way  
Woburn, MA 01801  
Phone: 781-933-8830

#### MINNESOTA

Thomas Tool & Supply  
1081 E. Highway 36  
Maplewood, MN 55109  
Phone: 651-765-4900

Thomas Tool & Supply  
945 37th Avenue NW  
Rochester, MN 55901  
Phone: 507-281-3786

Thomas Tool & Supply  
3401 West Highway 13  
Burnsville, MN 55337  
Phone: 952-895-5613

Thomas Tool & Supply  
2987 West Highway 12  
Willmar, MN 56201  
Phone: 320-231-1009

Thomas Tool & Supply  
4901 West Broadway  
Crystal, MN 55429  
Phone: 763-533-2499

## MINNESOTA (cont.)

Tool Warehouse Inc.  
3410 East 42nd Street  
Minneapolis, MN 55406  
Phone: 612-727-4260

Tool Warehouse Inc.  
9 Lincoln Avenue SE  
St. Cloud, MN 56302  
Phone: 800-868-7896

## NEBRASKA

Powerhouse Distributing  
11011 "I" Street  
Omaha, NE 68137  
Phone: 402-715-5999

## NEW YORK

Authorized Tool Repair  
153-27 Barclay Avenue  
Flushing, NY 11355  
Phone: 718-939-2661

Five Boro-Tronics, Inc.  
801 East 42nd Street  
Brooklyn, NY 11210  
Phone: 718-338-8911

Forestiére Power Tool & Equip. Co.  
62-02 64th Street  
Middle Village, NY 11379  
Phone: 718-416-0378

Sunrise Tool Repair  
124 Sunrise Highway  
West Islip, NY 11795  
Phone: 631-661-5548

## NORTH CAROLINA

Chris Supply Co. Inc.  
1640 S. Saunders Street  
Raleigh, NC 27603  
Phone: 919-833-4499

## OHIO

Cincinnati Electrical Repair LLC  
2023 Elm Street  
Cincinnati, OH 45202  
Phone: 513-621-2183

Spartan Tools  
1660 Alum Creek Drive  
Columbus, OH 43209  
Phone: 614-443-7607

Tool House, Inc.  
11909 Tramway Drive  
Sharonville, OH 45241  
Phone: 513-821-3000

## OREGON

Chas H. Day Company  
602 SE 11th Avenue  
Portland, OR 97214  
Phone: 503-232-1659

Eugene Power Tool Repair  
245 Van Buren  
Eugene, OR 97402  
Phone: 541-232-5081

## SOUTH CAROLINA

Trado Supply Inc.  
1015 Whitehall Road  
Anderson, SC 29625  
Phone: 800-868-7896

## TEXAS

American Tool & Fastener  
1331 E. Plano Pkwy, Ste. B  
Plano, TX 75074  
Phone: 972-801-9909

Empire Tools  
6327 West 34th Street  
Houston, TX 77092  
Phone: 713-957-8665

Floor Care Equipment Repair  
902 Old Austin Hutto Rd., #204  
Pflugerville, TX 78660  
Phone: 512-990-7177

The Tool Clinic  
5126-K Broadway Avenue  
Haltom City, TX 78117  
Phone: 817-656-5640

Tread-Mill Industrial  
5006 Railroad Avenue  
Deer Park, TX 77536  
Phone: 832-248-5952

## UTAH

A-1 Industrial Tool  
564 W. 9320 S  
Sandy, UT 84070  
Phone: 866-802-6383

## **CANADA SERVICE CENTERS**

### ALBERTA

Power Tool Klinik LTD  
Bay 6-2520 23rd St NE  
Calgary, Alberta T2E 8L2  
Phone: 403-276-4633

Dan's Power Tool Repair Service  
6331-13 Ave. N.W.  
Edmonton, Alberta T6L 2E5  
Phone: 780-490-1955

## BRITISH COLUMBIA

Apollo Stone Art Co. LTD  
Unit 105-4471 #6 Road  
Richmond, BC V6V 1P5  
Phone: 604-279-8577

## MANITOBA

Athena Small Equipment Repair  
1125 Empress Street  
Winnipeg, MB R3E 3H1  
Phone: 204-786-1900

## NEW BRUNSWICK

Electric Motor Services  
129 West Morland Street  
Fredericton, NB E2B 3L4  
Phone: 506-458-8770

## ONTARIO

Original Power Tools Co. Ltd.  
7508 Bath Road  
Mississauga, ON L4T 1L2  
Phone: 905-612-8252

Kingspoint Small Engine  
16-190 Bovaird Drive West  
Brampton, ON L7A 1A2  
Phone: 905-453-8048

Struthmann Enterprises  
13 287 Tiffin  
Barrie, ON L4N 7R8  
Phone: 705-726-9892

## QUEBEC

GranQuartz Stone Canada  
137 Rue Junction  
Stanstead, Quebec J0B 3E4  
Phone: 800-520-7223

Derusha Supply, Inc.  
33 Canusa Street  
Stanstead, Quebec J0B 3E2  
Phone: 819-876-2722

## **MEXICO SERVICE CENTERS**

ERI Garela, S.A. de C.V. Equipos  
Y Refacciones  
Industriales Gareli  
Av. Plan de Ayala #3487 Fracc.  
Revolucion Tlaquepaque,  
Jal. C.P. 45580  
Phone: 3587-5953

LaGacero Abrasivos S.A. DE C.V.  
Cuencame No. 190 Parq. Industrial  
Languenero Comez Palacio, DGO.  
Mexico C.P. 35078  
Phone: 871-719-1141

---



---



---



---



---



---



---



---



---



---

## Recommended Extension Cords

FLEX tools operate efficiently within 110-120 volts. Improper cord sizing will cause a drop in voltage, resulting in loss of power, overheating, and possible damage to the tool. Determine the rated amp listing of your tool from the specification label on the tool, then use the chart below to determine the proper gauge and length of cord to use.

AMP Rating	Cord Length								
	25	50	100	150	200	250	300	400	500
0-2	18	18	18	16	14	14	14	12	12
2-3	18	18	16	14	14	12	12	10	10
3-4	18	16	14	14	12	12	10	10	
4-5	18	16	14	12	10	10	10		
5-6	18	16	12	12	10	10			
6-8	16	14	12	10	10				
8-10	16	14	12	10					
10-12	16	14	10						
12-15	12	12	10						
15-20	10	10	10						

### Conversion Chart

#### inch to mm

1 inch = 25.4 mm  
1mm = 3/64 inch

#### To Convert to Millimeters (mm)

Multiply inches  
x 25.4

#### To Convert to Inches

Multiply millimeters  
x 0.03937 or  
divide by 25.4